



Best Western Plus Hotel Böttcherhof

Hamburg, Germany

who we are

our team

Judith Steinkamp-Kuffky // BQT Manager

Dennis Meyer // Ass. BQT Manager

Philipp Kaufmann // Reservation Manager

our venue

4-star superior hotel in Hamburg, Germany

164 modern rooms – quiet + cozy

20 conference rooms // flexible sizes for up to 190 people

Full-service restaurant and bar (7 days a week)

SPA and gym (520 m²)

On-site parking garage

location

(south-)east of Hamburg City Center

public transport:

bus station “Blaue Brücke” in front of the hotel

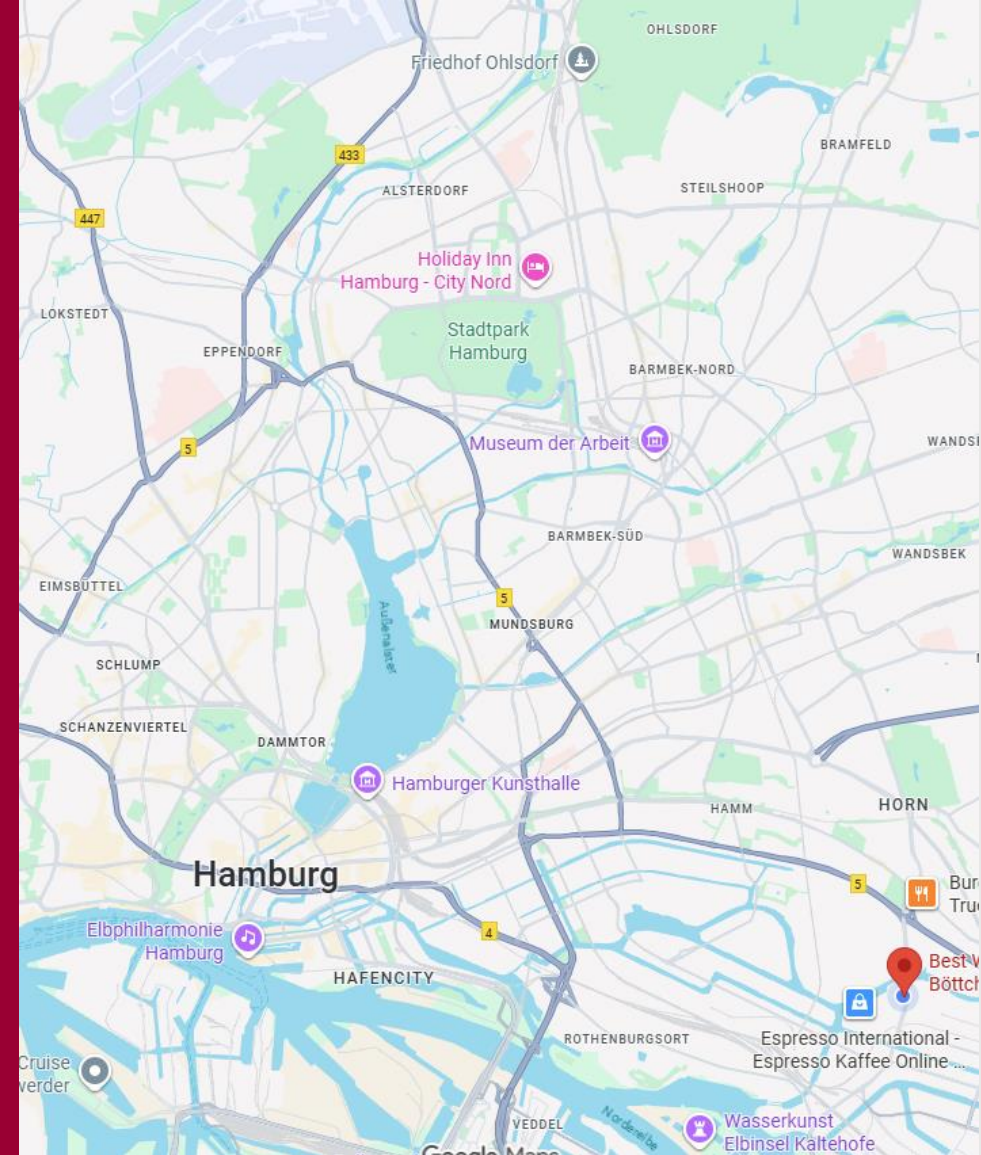
subway station “Horner Rennbahn” approx. 3 km

distances:

highway A1	4,5 km
Elbphilharmonie	8,3 km
main station	6,9 km
airport	14,1 km

MOIA ridepooling service

www.moia.io/en



rooms

5 different categories

Business // Premium // Premium Plus // Deluxe // Apartment

all rooms are non-smoking // no pets allowed

02 disabled-friendly rooms // access with wheelchair

extra bed/cribs on request

all rooms offer:

air-conditioning // free WIFI // safe // tea/coffee maker //

minibar (subject to charge)



Business rooms

22-24 m²

double or twin bed // bathroom with walk-in rain shower



Premium rooms

22-30 m²

double bed // bathroom with walk-in rain shower
preferred quiet location



PremiumPlus rooms

27-37 m²

double bed // bathroom with walk-in rain shower
preferred quiet location



Deluxe rooms

48 m²

double bed // bathroom with walk-in rain shower

separate sleeping and living areas

2 flatscreen TVs

separate lavatory

Living area with sofa and armchair



Apartment

44 m²

double bed // bathroom with walk-in rain shower

Kitchenette with stovetop, microwave and fridge

Dining table



restaurant and bar “Johann’s”

located on the main floor
non-smoking location

breakfast buffet

06:30 – 10:00 AM mo-fri

07:00 – 10:30 AM weekends

à la carte + seasonal menus

opening hours restaurant: noon – 10:00 PM

opening hours bar: 5 PM – midnight



spa and gym area

02 sauna rooms + 01 steam bath
rain-sky shower
relax areas

opening hours spa

04:00 PM – 10:00 PM mo-fri

10:00 AM – 10:00 PM weekends

Fitness area from 06:00 AM – 10:00 PM

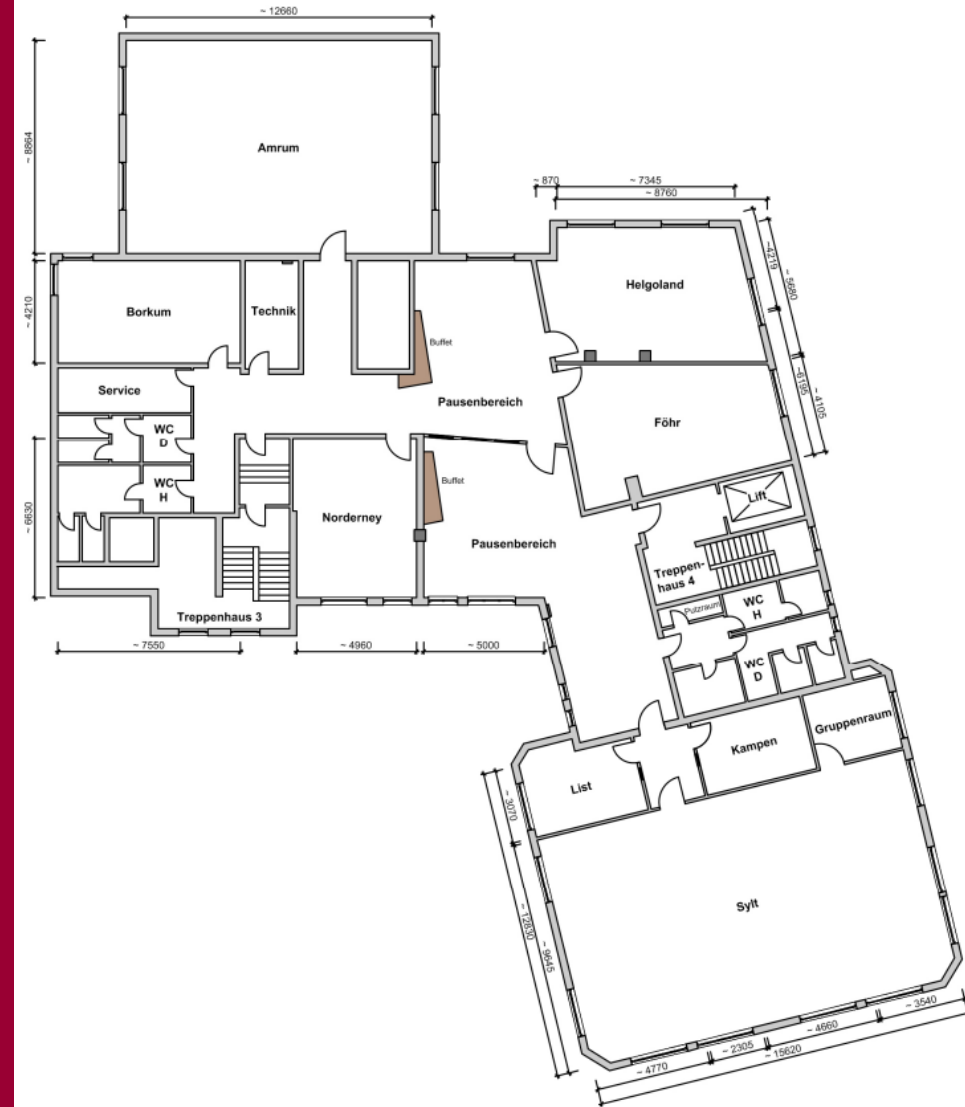
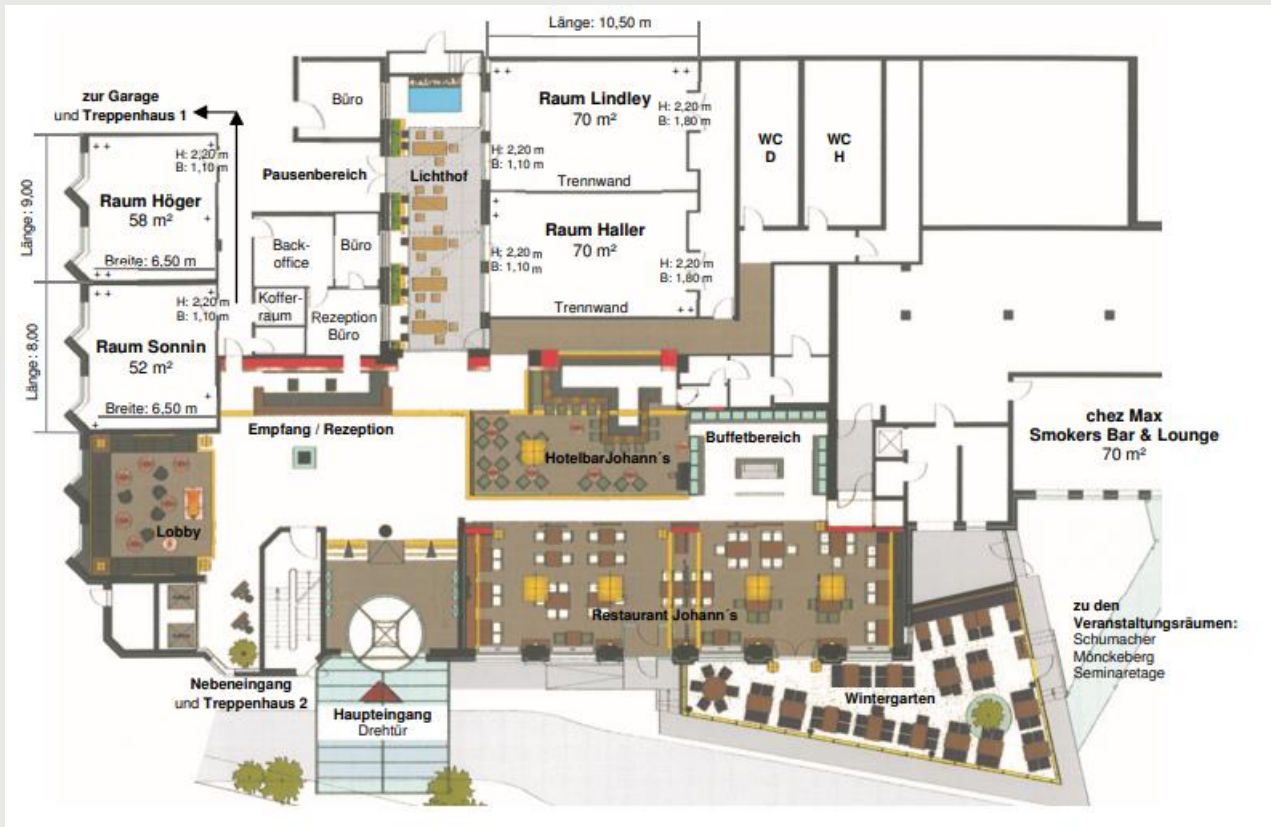
massages and treatments through our partner

Hanse Wellness

www.hanse-wellness.de



MICE



MICE

20 conference rooms // sizes from 15 – 200 m²
ground floor room „Schumacher“ accessible by car
conference floor on 2nd level // 8 conf. rooms and lobby
rhetoric studio on 7th floor

flexible seating
modern technical equipment incl. ClickShare system
daylight, air conditioning and blackout facilities

packages or individual services e.g. coffee breaks,
snacks, buffets or menus



other

24/7 reception desk

parking garage // 80 parking spaces + 6 electric
charging stations, each with 02 charging points

GreenSign certified

detailed information:

<https://portal.gastfreund.net/boettcherhof>



Thank you!

+49 40 731 87 801

info@boettcherhof.com

www.boettcherhof.com

follow us



<https://www.instagram.com/p/DQUWYXFCNmD/>

